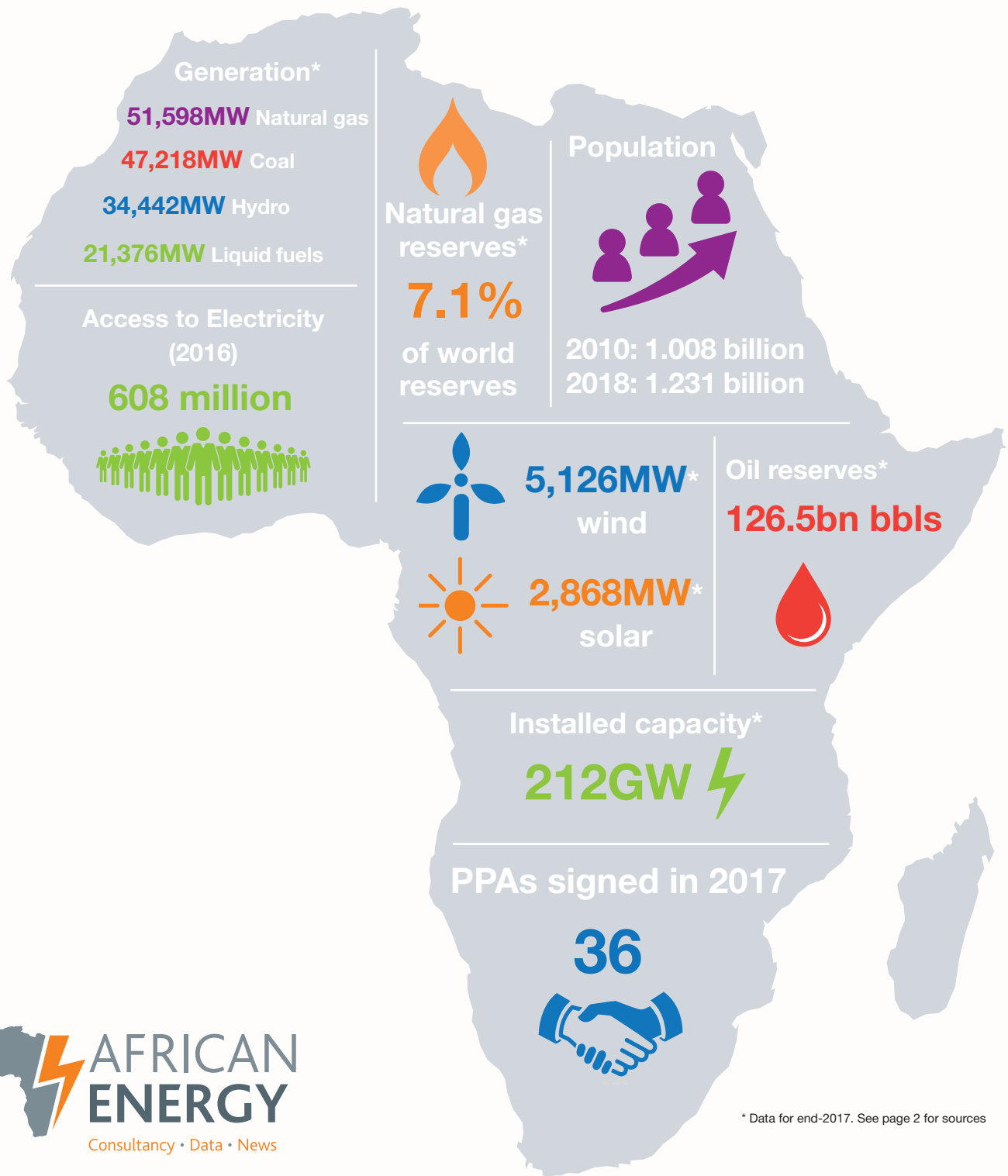


# African Energy Atlas



\* Data for end-2017. See page 2 for sources



## African Energy Atlas 2018/2019

### Editor

Thalia Griffiths - [thalia@africa-energy.com](mailto:thalia@africa-energy.com)

### Cartographer

David Burles

### Contributing Editors

Dan Marks, John Hamilton, Jon Marks

### Sales and Service

Direct: +44 (0) 1424 721 667

Email: [subscriptions@cbi-publishing.com](mailto:subscriptions@cbi-publishing.com)

Web: [www.africa-energy.com](http://www.africa-energy.com)



© 2018 Cross-border Information.

All rights reserved.

Published August 2018

Data and information published in the African Energy Atlas is provided to Cross-border Information (Cbi) by its staff and network of correspondents through extensive surveys of sources and published with the intention of being accurate. Cbi cannot insure against or be held responsible for inaccuracies and assumes no liability for any loss whatsoever arising from use of such data.

No portion of this publication may be photocopied, reproduced, retransmitted, put into a computer system or otherwise redistributed without prior authorisation from Cross-border Information.

Registered office: 4 Bank Buildings, Station Road, Hastings, East Sussex TN34 1NG, UK.

Directors: JJ Marks, JM Ford, JD Hamilton, NJ Carn, E Gillespie

### Cover illustration

Power generation data including installed capacity, fuel mix breakdown figures and PPAs signed are for end 2017 and taken from **African Energy Live Data** – a platform providing project level detail on more than 5,000 generation projects and a full suite of tools to analyse electricity sector statistics and demographics alongside the project pipeline.

Electricity access data for 2016 is sourced from the SEforALL/World Bank database.

Data for oil and gas reserves is for 2017 and taken from the BP Statistical Review of World Energy, June 2018.

Population data is sourced from the IMF.

## Power definitions

### Status:

**Operating** means plants that are producing electricity, even if this is substantially below maximum capacity.

**Construction** means that building work is ongoing at the site.

**Planned** means any project which has not yet begun construction. This includes projects which are at a very early stage of development, such as identified hydro sites, as well as those which are much more advanced. The data tables shown under the maps refer only to planned projects displayed on the map.

### Fuels:

**Natural gas** means any plant fuelled by natural gas, whatever the source, including both liquefied natural gas (LNG) and pipeline gas.

**Liquid fuels** include all fuel oils, crude oils, shale oil and liquid gases.

**Coal** refers to technologies using coal as the original source of energy.

**Other thermal** largely comprises plants where the exact fuel is unknown as well as industrial cogeneration, methane, peat and coal bed methane. These are occasionally displayed separately.

**Nuclear** refers to technologies utilising the energy contained within the atomic structure of matter, including both fission and fusion.

**Hybrid** means plants which use two or more very different resources, such as solar and diesel.

**Hydroelectric** includes any technology based on the movement or weight of water from a river or reservoir, including pumped storage.

**Solar** refers to any technology producing electricity using energy from the sun.

**Wind** refers to any technology producing electricity using energy from the wind.

**Geothermal** includes any plant using underground temperature differentials to produce power.

**Wave/tidal** is any technology using the ocean as its source of energy.

**Biomass** means technology using organic matter as a feedstock, including biogas technologies.

The Atlas is necessarily constrained in the number of projects that can be displayed. For a full list of power generation plants and projects, please visit African Energy Live Data. [www.africa-energy.com/database](http://www.africa-energy.com/database)

## FOCUS

Introduction	4
African Energy Live Data	6
Roads, railways, ports, airports	10
Climate, population, income, fossil fuels, power generation	11
Finance	12
Political risk ratings	13
Regional groupings	14
Economic Africa	15
Economic indicators by country	16
Key energy trends	18

## POWER

National electricity companies	19
Power pools	19
Trends	20

## North Africa

Morocco, Mauritania	23
Algeria	24
Tunisia	25
Libya	26
Egypt	27
The Mediterranean Basin	28

## Sub-Saharan Africa

Senegal, The Gambia, Guinea-Bissau, Cape Verde	31
Guinea, Sierra Leone, Liberia	32
Mali, Niger, Burkina Faso	33
Côte d'Ivoire	34
Ghana, Togo, Benin	35
Nigeria	36
Cameroon, Central African Republic, Chad	37
Rep. of Congo, Gabon, Equatorial Guinea, STP	38
Democratic Republic of Congo	39
Sudan, South Sudan	40
Ethiopia, Eritrea, Djibouti, Somalia	41
Uganda, Rwanda, Burundi	42
Kenya	43
Angola	44
Tanzania	45
Namibia	46
Botswana	47
Zambia	48
Zimbabwe	49
Mozambique	50

Malawi, Madagascar, Indian Ocean islands	51
South Africa, Swaziland, Lesotho	52

## UPSTREAM OIL AND GAS

National oil and gas companies and state regulators	55
Opec, GECF, EITI	55

## North Africa 56

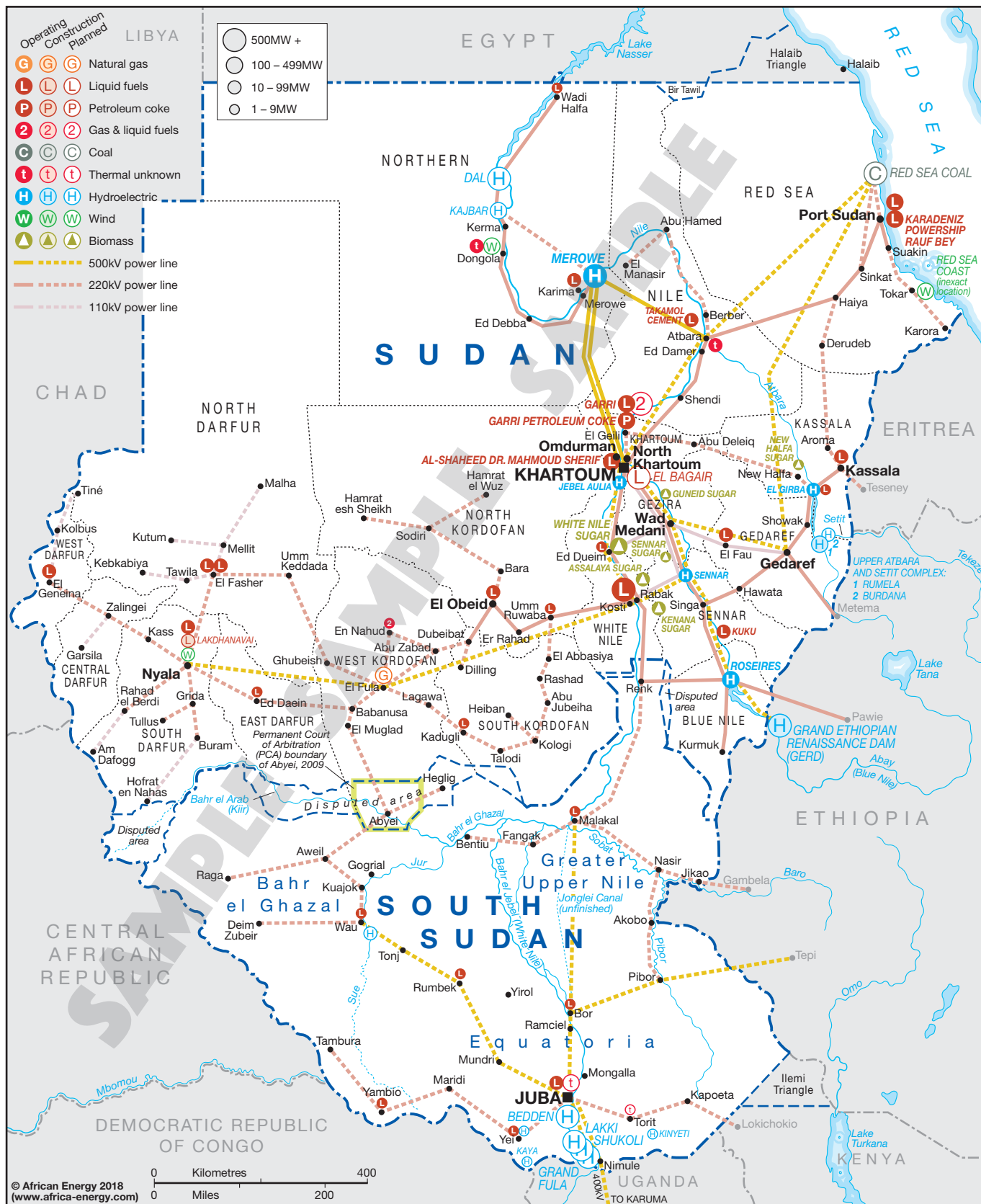
Morocco	57
Algeria	58
Tunisia	60
Libya	61
Egypt	62

## Sub-Saharan Africa 65

Mauritania, Senegal, The Gambia	67
Guinea, Guinea-Bissau, Sierra Leone, Liberia	68
Mali, Niger, Chad, Burkina Faso, Central African Rep.	69
Côte d'Ivoire	70
Ghana, Togo, Benin	71
Cameroon	72
Nigeria	73
Niger Delta	74
Equatorial Guinea, São Tomé and Príncipe	76
Gabon	77
Republic of Congo	78
Democratic Republic of Congo	79
Sudan, South Sudan	80
Ethiopia, Eritrea, Djibouti	81
Somalia	82
Angola	83
Uganda, Rwanda, Burundi	85
Kenya	86
Tanzania	87
Zambia, Malawi, Botswana	88
Mozambique, Ruvuma Basin	89
Namibia	90
South Africa	91
Madagascar, Indian Ocean	92

## DOWNSTREAM 94

World oil and gas production	95
Oil refineries, CTL and GTL plants	96
Gas development and commerce	98



© African Energy 2018  
 (www.africa-energy.com)

0 Kilometres 400  
 0 Miles 200



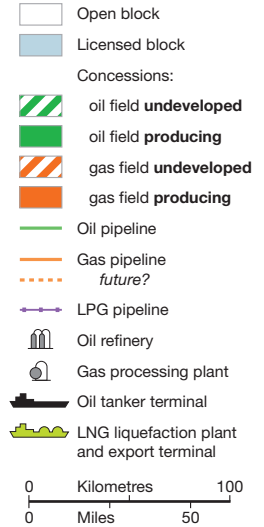
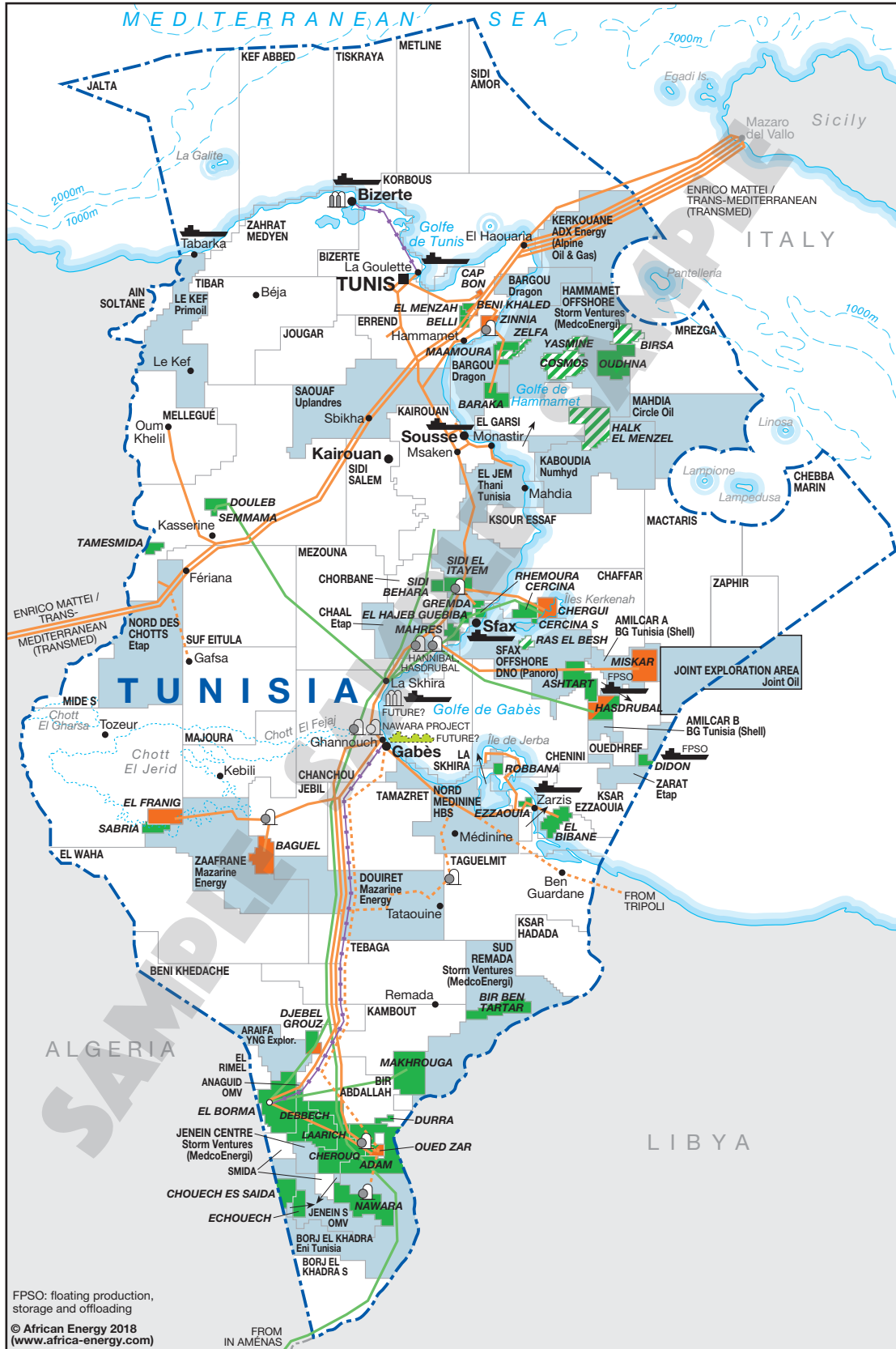
Plants/projects	Capacity (MW)
Operating	5,748
Construction	0
Planned	4,369

### Access to electricity (2016, millions)

Population	11.4
Those with access	11.4
% with access	100

Source: African Energy Live Data, July 2018. Search for a power plant or project at [www.africa-energy.com/database](http://www.africa-energy.com/database)

Source: SEforALL, IMF



### OIL AND GAS FIELDS AND THEIR OPERATORS (from north to south)

CAP BON	Etap
BENI KHALED	Exxoil
EL MENZAH	Ecumed
BELLI	Ecumed
ZINNIA	Winstar (Serinus)
ZELFA	Lundin
MAAMOURA	Eni Tunisia
YASMINE	Storm Ventures (MedcoEnergy)
COSMOS	Storm Ventures (MedcoEnergy)
BIRSA	Top Energy
OUDHNA	Lundin
BARAKA	Eni Tunisia
HALK EL MENZEL	Topic SA
DOULEB	Serept*
SEMMAMA	Serept*
TAMESMIDA	Serept*
SIDI EL ITAYEM	CFTPT†
SIDI BEHARA	CFTPT†
GREMDA	Etap
RHEMOURA	Etap
EL HAJEB GUEBIBA	Etap
MAHRES	Eni Tunisia
CHERGUI	Perenco
CERCINA	Etap
CERCINA S	Etap
RAS EL BESH	DNO (Panoro)
MISKAR	BG Tunisia (Shell)
ASHTART	Serept*
HASDRUBAL	BG Tunisia (Shell)
DIDON	Etap
ROBBANA	Ecumed
EZZAOUIA	Etap
EL BIBANE	Ecumed
EL FRANIG	Perenco
SABRIA	Winstar (Serinus)
BAGUEL	Perenco
BIR BEN TARTAR	Storm Ventures (MedcoEnergy)
DJEBEL GROUZ	Eni Tunisia
MAKHROUGA	Eni Tunisia
EL BORMA	Sitep (Eni)
DEBBECH	Eni
LAARICH	Eni
CHEROUQ	OMV
DURRA	OMV
OUED ZAR	Eni Tunisia
ADAM	Eni Tunisia
CHOUECH ES SAIDA	Winstar (Serinus)
ECHOUECH	Winstar (Serinus)
NAWARA	OMV

FPSO: floating production, storage and offloading  
 © African Energy 2018  
 (www.africa-energy.com)

2017	Oil
Production	53,000 b/d
% of African total	0.7
Proved reserves	400m bbls

Source: BP Statistical Review of World Energy, June 2018



**African Energy Newsletter**  
 Keep up to date with news and analysis of market developments, project awards and political and governance issues.  
[www.africa-energy.com/news-centre](http://www.africa-energy.com/news-centre)